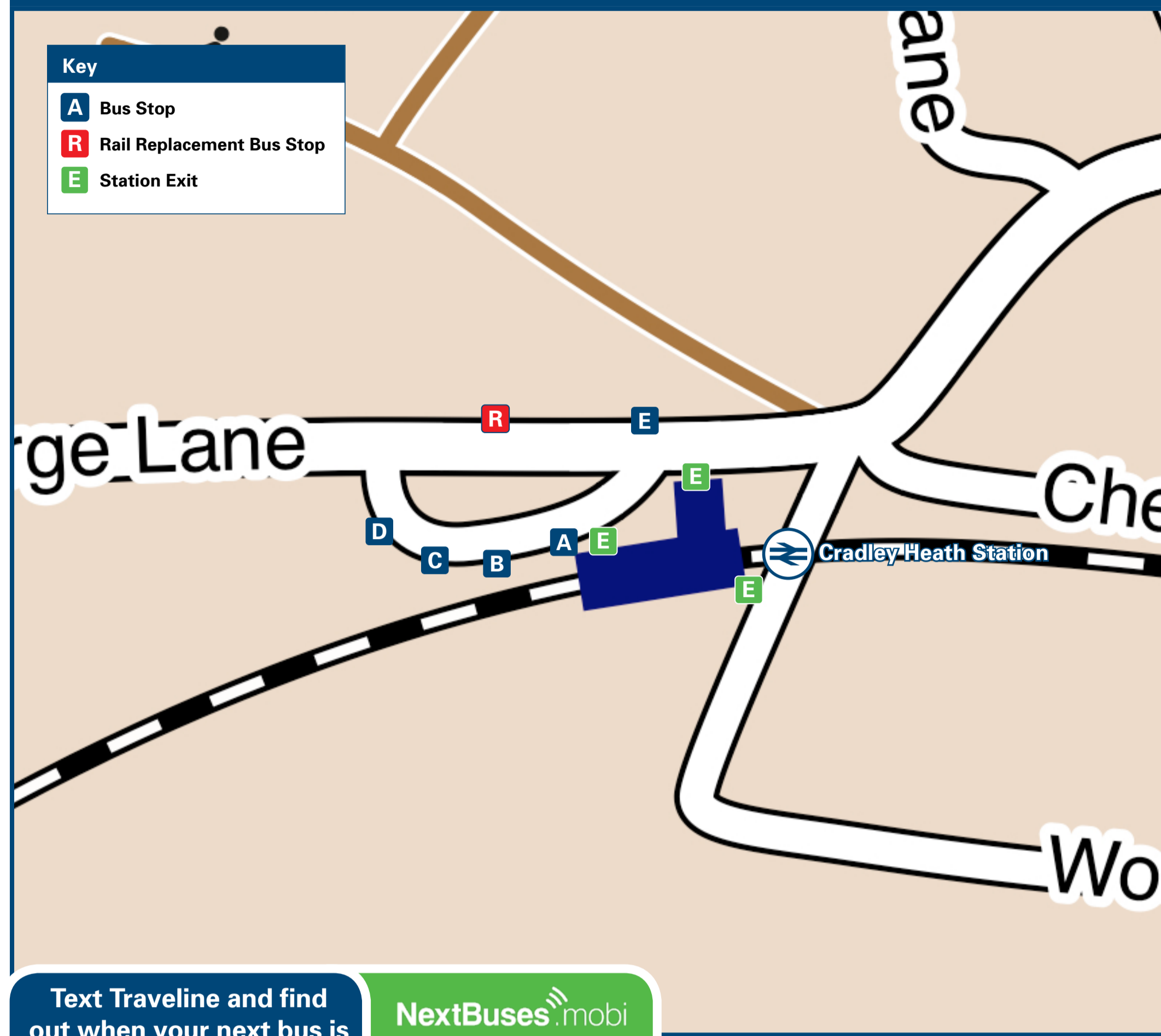




Cradley Heath Station

Onward Travel Information

Buses



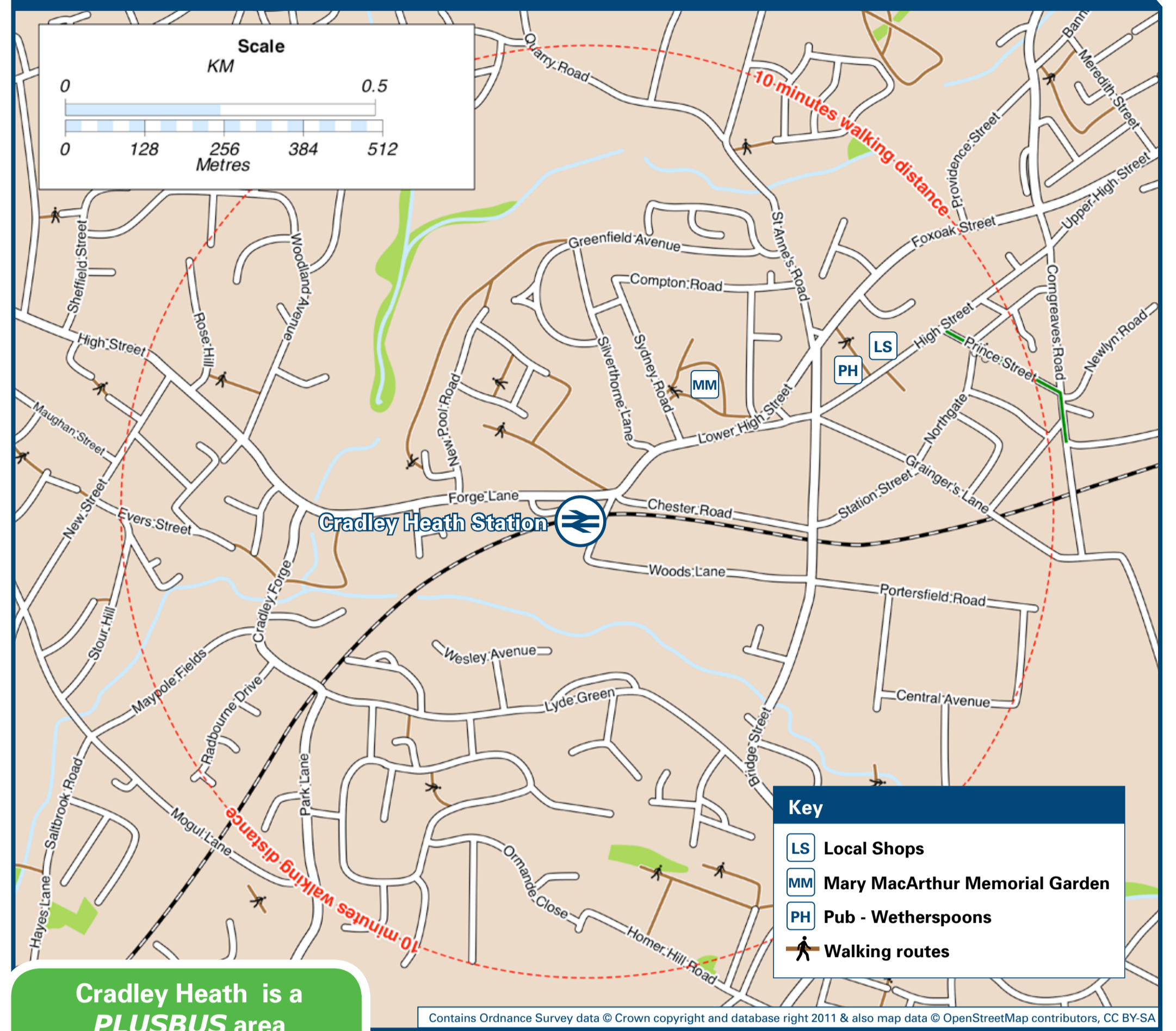
Text Traveline and find out when your next bus is



Text the relevant code for your bus stop to 84268 and receive a text back with the time of the next bus. Traveline texts cost up to 25p for each successful response (plus usual text costs).

- A** nwmdjwgt **B** nwmdjwjt **C** nwmdjwmt
- D** nwmdjwtp **E** nwmdmagd

Local area map



Cradley Heath is a PLUSBUS area



PLUSBUS is a discount price 'bus pass' that you buy with your train ticket. It gives you unlimited bus travel around your chosen town, on participating buses. Visit www.plusbus.info

Main destinations by bus (Data correct at September 2012)

DESTINATION	BUS ROUTES	BUS STOP
Aston	123	E
Baptist End	124	D
Bearwood Interchange (Court Oak)	123, 141	E
Blackheath	123	E
Brandhall	224, 404A*, 404H**	C
Brickhouse Farm	141	E
	208	A
	224, 404A*, 404H**	C
Brierley Hill	213, 214	D
	297	B
Bristnall Fields	123	E
Burnt Tree	208	A
Cape Hill	123	E
Causeway Green	123	E
Chad Valley	141	E
Colley Gate	240	C
	214	D
Coombeswood	297	E
	124	D
Dudley (Bus Station)	208	A
	224	C
	208	A
Dudley Wood	124	D
	213, 214	D
Fatherless Barn	240	C
Gornal Wood	297	B
Grace Mary Estate	208	A
	208	A
Haden Hill	240, 404A*, 404H**	C
	123, 141, 297	E
Halesowen	297, 141	E
Hall End	404A*, 404H**	C

DESTINATION	BUS ROUTES	BUS STOP
Hawne	141, 297	E
Handsworth	123	E
Holly Hall (for Russells Hall Hospital)	297	B
Hurst Green	123, 141	E
The Knowle	208	A
	224	C
Lamberts End	404H**	C
Langley	404A*, 404H**	C
	123	E
Lozells	123	E
Lye	240	C
	123, 141, 404H**	A
Merry Hill (Bus Station)	208, 297	B
	213, 214	D
Netherend	213, 214	D
Netherton	124	D
Newtown	123	E
	208	A
Old Hill	224, 404A*, 404H**	C
	123, 297	E
Oldbury Interchange	404A*, 404H**	C
Old Swinford	240	C
Palfrey	404A*, 404H**	C
Pensnett	297	B
Portway	208	A
	123, 141, 404H**	A
Quarry Bank (High Street)	208, 297	B
	213, 214	D
Quinton/Ridgacre	141	E
Ridgacre	141	E
Rowley Regis Hospital	208	A
	224	C

DESTINATION	BUS ROUTES	BUS STOP
Saltwells	124	D
Sandwell District Hospital	404A*, 404H**	C
Sandwell & Dudley Station	404A*, 404H**	C
Soho	123	E
Springfield	224	C
Stamermill	240	C
Stickley	297	B
Stone Cross	404A*, 404H**	C
Stourbridge	240	C
Tame Bridge Station	404A*, 404H**	C
Tansey Green	297	B
	214	D
Timbertree Estate	240	C
	224	C
Tipton	208	A
Tividale	404A*, 404H**	C
Walsall	123, 141	E
Warley	404A*, 404H**	C
West Bromwich	404A*, 404H**	C
Whiteheath Gate	404A*, 404H**	C
Witton	123	E
Wynall	240	C

Notes

- PLUSBUS destination, please see below for details.
- * Bus route 404A* runs Monday to Fridays, Saturdays mornings and evenings, and Sunday evenings only.
- ** Bus route 404H** runs Saturday and Sunday daytime, only.

Taxis

Cradley Heath station has neither a taxi rank nor a cab office. Advance booking is essential. Consider using the following local operators:

Speedway
01384 633 444

Royal and Black
01384 413 200

Top Gear
0121 559 1900

Further information about all onward travel

Local Authorities

sandwell.gov.uk
For more information about cycle routes.

Sustrans

sustrans.org.uk
Sustrans is the UK's leading sustainable transport charity.

Bus Times

See timetable displays at bus stops. www.traveline.info
0871 200 22 33
calls from landlines cost 10p per minute

traintaxi

traintaxi.co.uk
A guide to taxis serving all train, tram, metro and underground stations in the UK.

PLUSBUS

plusbus.info
A discount price 'bus pass' that you buy with your train ticket. It gives you unlimited bus travel around your chosen town, on participating buses.

National Rail Enquiries

Website

nationalrail.co.uk
Follow us on Twitter @nationalrailenq

Contact Centre

08457 48 49 50
All calls are charged at local rate and may be recorded.

TrainTracker™

0871 200 49 50
For up-to-the-minute automated journey planning, with fare and ticket availability for today and beyond. Calls cost 10p a minute from a BT fixed phone. Charges from other operators may vary.

TrainTracker™ Text

8 49 50
For live departure and arrival times direct to your mobile. TrainTracker™ texts cost 25p for each successful response (plus usual text costs).

Textphone

0845 60 50 600
For customers with hearing impairments.

This poster shows details of popular destinations and main, frequent bus routes. Additional services may run, so please check with Traveline or see posters at local bus stops. Whilst considerable care has been taken to ensure the information contained on this poster is correct and accurate, National Rail cannot accept responsibility for any loss or inconvenience caused by any errors or omissions, or for loss, damage, injury or inconvenience relating to the cancellation, alteration, delay or diversion of a service. For any feedback, please e-mail comments@onwardtravelposters.com



National Rail
Britain's train companies working together