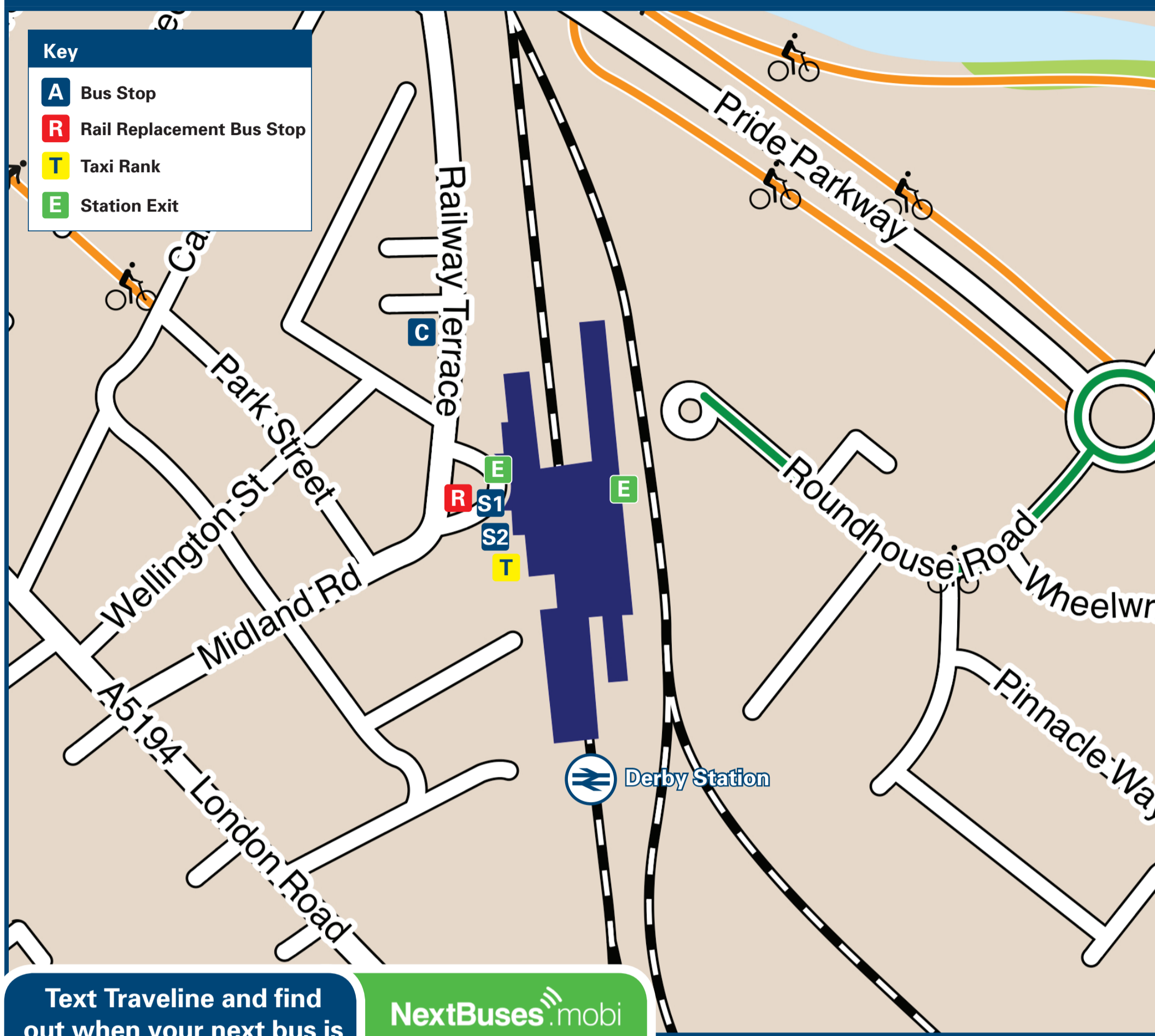




# Derby Station

# Onward Travel Information

## Buses and Taxis



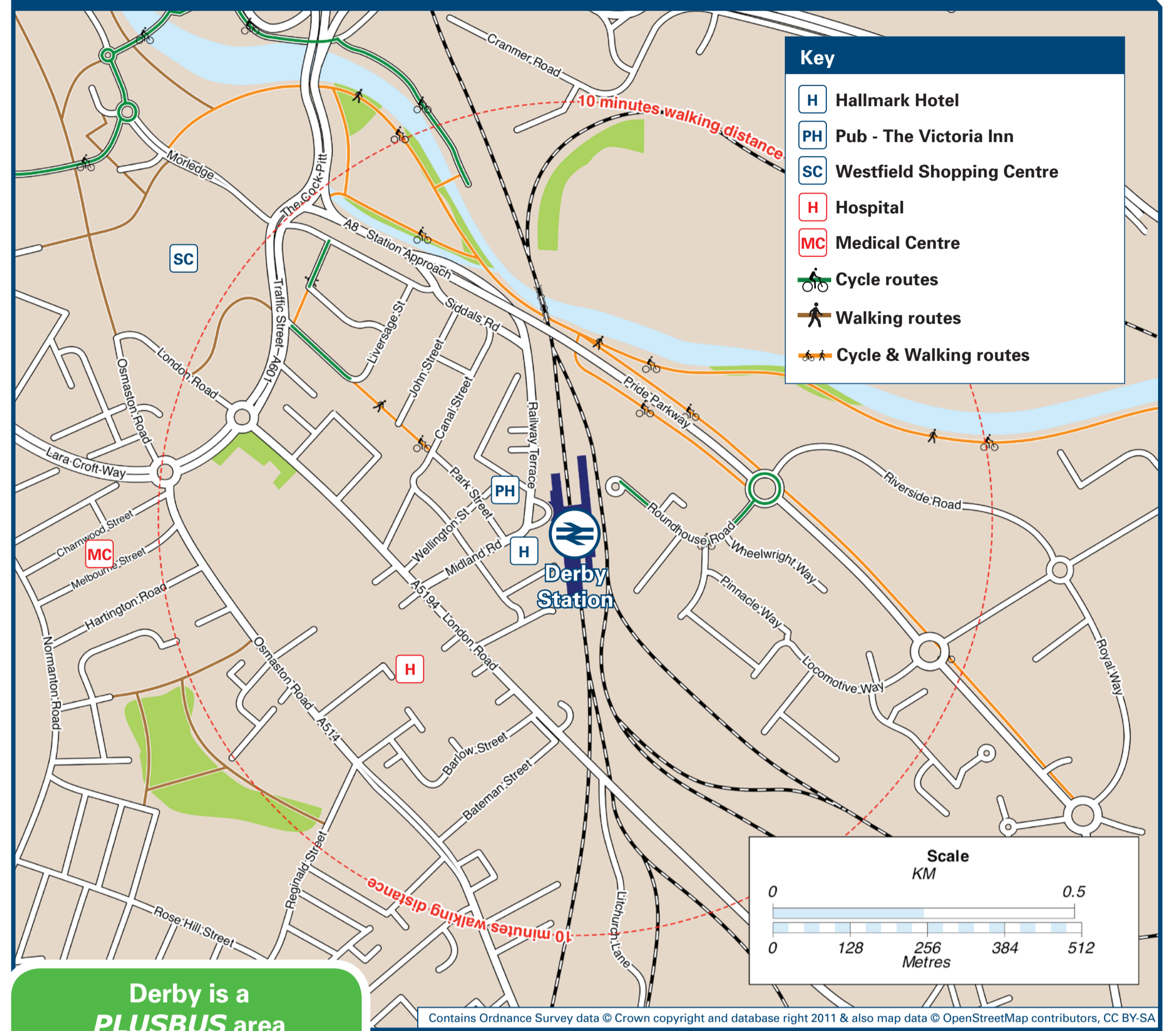
Text Traveline and find out when your next bus is

NextBuses **mobi**

Text the relevant code for your bus stop to 84268 and receive a text back with the time of the next bus. Traveline texts cost up to 25p for each successful response (plus usual text costs).

**C** dbyadajt **S1** dbyadamd  
**S2** dbyadaip

## Local area map



Derby is a **PLUSBUS** area



**PLUSBUS** is a discount price 'bus pass' that you buy with your train ticket. It gives you unlimited bus travel around your chosen town, on participating buses. Visit [www.plusbus.info](http://www.plusbus.info)

## Main destinations by bus

(Data correct at August 2012)

DESTINATION	BUS ROUTES	BUS STOP
• Allenton	41, 45	<b>S2</b>
• Allestree (University of Derby)	6, 109	<b>S1</b>
Alton Towers*	X52*	<b>C</b>
• Alvaston	41, 44, 73	<b>S2</b>
	SKYLINK	<b>S1</b>
Ashbourne	109	<b>S1</b>
• Boulton Lane	44, 45	<b>S2</b>
Bradley	109	<b>S1</b>
Castle Donnington	SKYLINK	<b>S1</b>
Cross o' th' Hands	109	<b>S1</b>
• Derby Bus Station	40, 44, 45, SKYLINK	<b>C</b>
	109	<b>S1</b>

DESTINATION	BUS ROUTES	BUS STOP
• Derby City Centre	40, 44, 45, SKYLINK	<b>C</b>
	109	<b>S1</b>
East Midlands Airport	SKYLINK	<b>S1</b>
Holbrook Road	44	<b>S2</b>
Hulland Ward	109	<b>S1</b>
Kedleston	109	<b>S1</b>
• Litchurch Lane	41, 44, 45, 73	<b>S2</b>
	SKYLINK	<b>S1</b>
• London Road	41, 44, 45, 73	<b>S2</b>
	SKYLINK	<b>S1</b>
Muggington	109	<b>S1</b>
• Osmaston	41	<b>S2</b>

DESTINATION	BUS ROUTES	BUS STOP
• Pear Tree	41	<b>S2</b>
Quarndon	109	<b>S1</b>
Radford Street	44, 45	<b>S2</b>
Shardlow	SKYLINK	<b>S1</b>
Weston-on-Trent	73	<b>S2</b>
Weston Underwood	109	<b>S1</b>
• Wilmorton	41, 44, 45, 73	<b>S2</b>
	SKYLINK	<b>S1</b>

### Notes

- **PLUSBUS** destination, please see below for details.
- Service 6 operates on Mondays to Fridays only.
- Services 40, 41, 44, 45 & SKYLINK operate on Mondays to Sundays.
- Services 73 & 109 operate on Mondays to Saturdays.
- \* Service X52 operates daily, departing at 09:40 only.

## Taxis

Derby is a major station with taxis usually available on a rank. Advance booking is not normally necessary or even possible, unless arriving early in the morning or late at night. Operators who may accept bookings include:

**Midland**  
01332 345 345

**Swift**  
01332 366 266

**Western Car**  
01332 331 331

## Further information about all onward travel

### Local Authorities

[derby.gov.uk](http://derby.gov.uk)  
For more information about cycle routes.

### Sustrans

[sustrans.org.uk](http://sustrans.org.uk)  
Sustrans is the UK's leading sustainable transport charity.

### Bus Times

See timetable displays at bus stops. [www.traveline.info](http://www.traveline.info)  
0871 200 22 33  
calls from landlines cost 10p per minute

### traintaxi

[traintaxi.co.uk](http://traintaxi.co.uk)  
A guide to taxis serving all train, tram, metro and underground stations in the UK.

### PLUSBUS

[plusbus.info](http://plusbus.info)  
A discount price 'bus pass' that you buy with your train ticket. It gives you unlimited bus travel around your chosen town, on participating buses.

## National Rail Enquiries

### Website

[nationalrail.co.uk](http://nationalrail.co.uk)  
Follow us on Twitter @nationalrailenq

### Contact Centre

08457 48 49 50  
All calls are charged at local rate and may be recorded.

### TrainTracker™

0871 200 49 50  
For up-to-the-minute automated journey planning, with fare and ticket availability for today and beyond. Calls cost 10p a minute from a BT fixed phone. Charges from other operators may vary.

### TrainTracker™ Text

8 49 50  
For live departure and arrival times direct to your mobile. TrainTracker™ texts cost 25p for each successful response (plus usual text costs).

### Textphone

0845 60 50 600  
For customers with hearing impairments.

This poster shows details of popular destinations and main, frequent bus routes. Additional services may run, so please check with Traveline or see posters at local bus stops. Whilst considerable care has been taken to ensure the information contained on this poster is correct and accurate, National Rail cannot accept responsibility for any loss or inconvenience caused by any errors or omissions, or for loss, damage, injury or inconvenience relating to the cancellation, alteration, delay or diversion of a service. For any feedback, please e-mail [comments@onwardtravelposters.com](mailto:comments@onwardtravelposters.com)



**National Rail**  
Britain's train companies working together